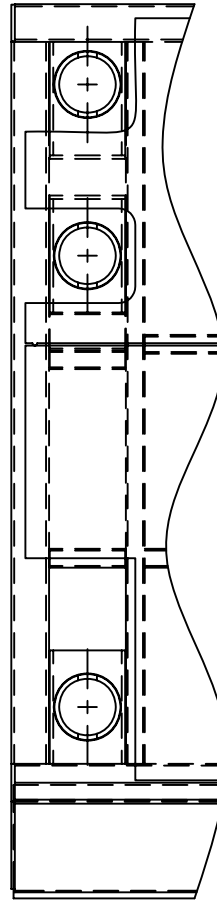


**Step 1:**

Remove Skin From Inside Face Of Panel Until The Next End Post Or Stinger Extension Is Exposed.

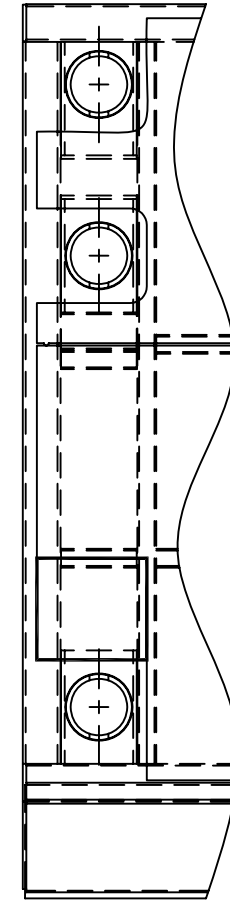
**Warning:** Take care When Removing Old Skin To Not Cut Into Supporting Tubes.



**Step 2:**

Install The Collar And Blocking (Blocking When Necessary) To Manufacturer Recommended Dimensions.

**Weld 100%** At Every Point Possible.



**Step 3:**

Cover All Exposed Area With Skin Made From Manufacture Materials.

**Weld 100%** At Every Point Possible.

